



# INSTRUCTIONS & PARTS LIST FOR 1410 & 1412 AIR DRILLS

## AIR SUPPLY

The efficiency of the tool is dependent on the proper supply of clean dry air at about 90 psig. The use of a line filter, pressure regulator, and lubricator will insure maximum output and service life of tools.

Before connecting the tool, blow the air line to remove water and dirt which may have accumulated. This is especially important for a new line or when the line has not been used for some time.

## HOSE AND HOSE CONNECTIONS

Supply hose should be not less than 5/16" I.D. Extension hoses should be at least 3/8" I.D. Use couplings and fittings with at least 5/16" I.D.

## LUBRICATION

An airline lubricator, set to deliver one drop per minute, is recommended. If a lubricator is not used, about one fourth teaspoon of oil should be poured into the air inlet daily. SIOUX No. 288 air motor oil, which contains a moisture absorbent and rust preventative, is recommended.

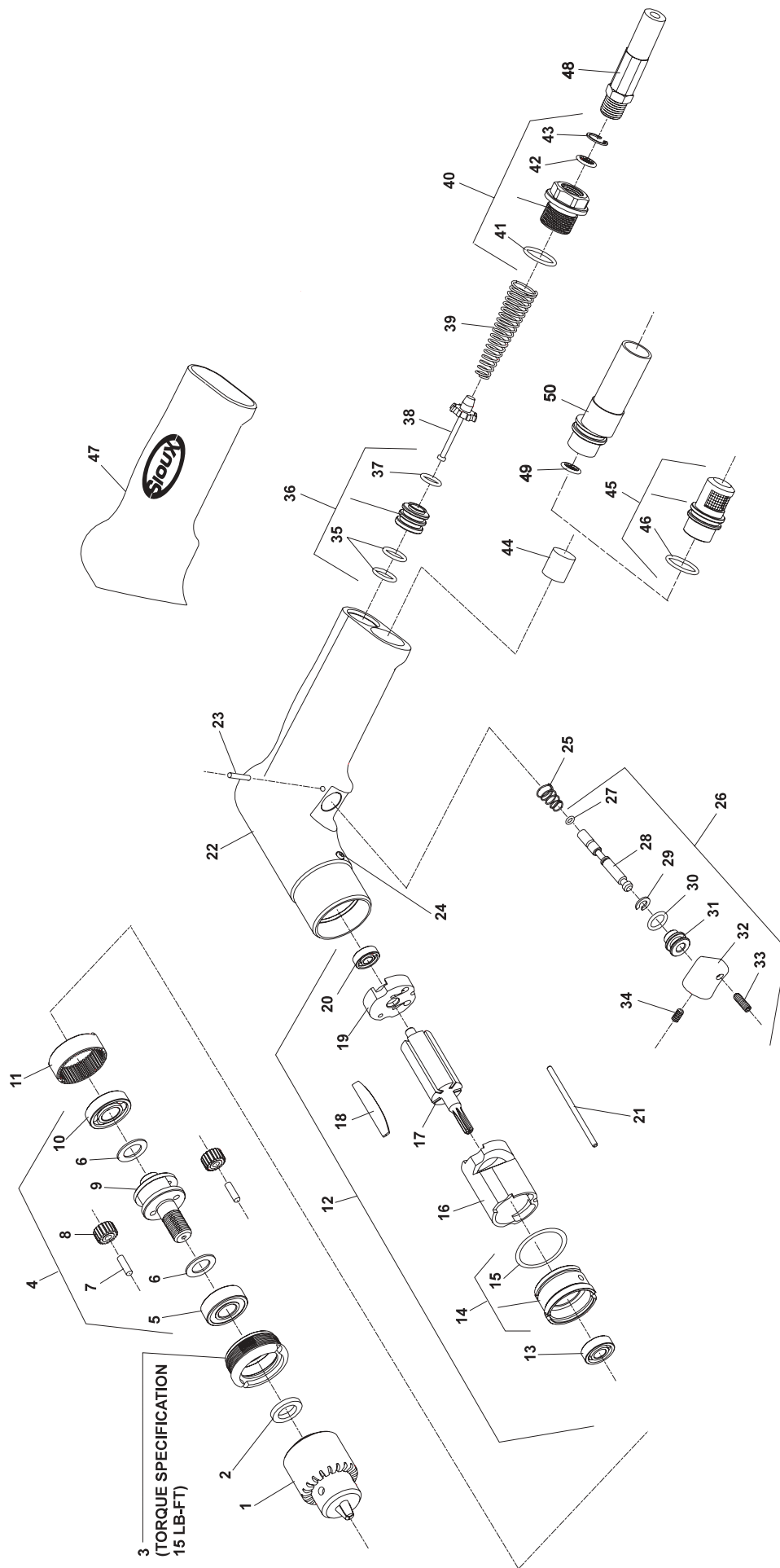
The gearing is lubricated with SIOUX No. 1232A grease and should be greased every 50 hours of operation.

## GENERAL OPERATION

This tool is equipped with a teasing throttle. By slightly depressing the trigger the chuck will rotate slowly. This is useful for starting a drill bit without first spotting with a punch. By fully depressing the trigger the chuck will rotate at its top speed.

A speed control adjusting screw is located on the trigger face and is adjusted with a 1/16" Allen wrench.

**SIoux™**  
**TOOLS INC.**



# PARTS LIST FOR 1410 & 1412 AIR DRILLS

Fig. No.	Part No.	Description	Fig. No.	Part No.	Description
1.	21019	Chuck—1/4" Capacity (1410, 1412)	22.	66166	Housing—Offset Handle (Includes Figure 24)
	30202	Key—Chuck (1410,1412)	23.	66299	Pin—Groove
	21077	Chuck—1/4" Capacity (1410A)	24.	30375	Fitting—Grease
	30000	Key—Chuck (1410A)	25.	21441	Spring
2.	44122	Spacer—Chuck	26.	66300	Assembly—Trigger
3.	66249	Retainer	27.	14349	Ring—"O"
4.	43803	Assembly—Planetary Reduction (1410) (Includes Figures 5 thru 10)	28.	66247	Rod—Trigger
	43804	Assembly—Planetary Reduction (1412) (Includes Figures 5 thru 10)	29.	21542	Ring—Retaining
5.	10257	Bearing—Ball	30.	14311	Ring—"O"
6.	25680	Washer (2)*	31.	66245	Sleeve—Trigger
7.	30453	Pin (2)*	32.	66215	Trigger
8.	19212	Gear—Idler (1410)(2)*	33.	06188	Screw—#6-32 x 7/16 Set Socket Hex
	19195	Gear—Idler (1412)(2)*	34.	66295	Screw—#6-32 x 1/4 Set Socket Hex Flat Point
9.	44920	Carrier—Gear (1410)	35.	14312	Ring—"O" (2)*
	44921	Carrier—Gear (1412)	36.	67399	Seat—Valve
10.	10241	Bearing—Ball	37.	04252	Ring—"O"
11.	19189	Gear—Ring	38.	66251	Assembly—Valve
12.	66002	Assembly—Motor (6 Tooth) (1410)	39.	66294	Spring—Tapered Compression
	66003	Assembly—Motor (8 Tooth) (1412)	40.	66244	Adapter—Inlet
13.	65998	Bearing—Ball	41.	14378	Ring—"O"
14.	65995	Plate—Lower End	42.	30463	Screen
15.	14391	Ring—"O"	43.	21541	Ring—Retaining
16.	66005	Cylinder	44.	66325	Pad—Silencer
17.	65991	Rotor—6 Tooth (1410)	45.	66243	Deflector—Exhaust
	65992	Rotor—8 Tooth(1412)	46.	14378	Ring—"O"
18.	66190	Vane (Set of 5)	47.	66520	Grip
19.	66004	Plate—Upper End	48.	43223	Hose—1/4" Air
20.	10255	Bearing—Ball	49.	30462	Screen
21.	66132	Pin	50.	66537	Assembly—Exhaust Hose
				65505	Cable Ties (4 per package)(Not Shown)

Remote  
Exhaust

## Complete Assembly:

66241 Assembly—Housing, Offset  
(Includes Figures 22 thru 46)

\* Order Quantity As Needed

**Furnish Catalog, Serial, and Model Number When Ordering Parts**



# GENERAL SAFETY INSTRUCTIONS FOR AIR TOOLS

1. **KEEP WORK AREA CLEAN:** Cluttered areas and benches invite accidents.
2. **AVOID DANGEROUS ENVIRONMENT:** Keep work-area well lit,
3. **KEEP CHILDREN AWAY:** All visitors should be kept safe distance from work area.
4. **STORE IDLE TOOLS:** When not in use, tools should be stored in dry, high or locked-up place-out of reach of children.
5. **DON'T FORCE TOOL:** It will work best and safest at the designed rate.
6. **RIGHT TOOL USE:** Don't force small tool to do the job of a heavy-duty tool.
7. **WEAR PROPER APPAREL:** No loose clothing or jewelry to get caught in moving parts.
8. **USE SAFETY GLASSES:** Use safety glasses with most tools. Also face or dust mask if it is a cutting operation.
9. **SECURE WORK:** Use clamps or vise to hold work. It's safer than using your hand and it allows freedom of both hands to hold tool.
10. **DON'T OVERREACH:** Keep proper footing and balance at all times.
11. **MAINTAIN TOOLS WITH CARE:** Keep tools sharp and clean for best and safest performance. Follow instructions for lubricating and changing accessories.
12. **DISCONNECT TOOLS:** When not in use: before servicing; when changing accessories such as blades, bits, cutter, etc.
13. **REMOVE ADJUSTING KEYS AND WRENCHES:** Form habit of checking to see that keys and adjusting wrenches are removed from tool before turning it on.
14. **CAUTION:** The use of an accessory with this tool not provided or specified by SIOUX TOOLS may be hazardous.

**SIOUX<sup>TM</sup>**  
**TOOLS INC.**

2901 FLOYD BOULEVARD ■ PO BOX 507 ■ SIOUX CITY, IOWA 51102-0507 ■

Printed In U.S.A.